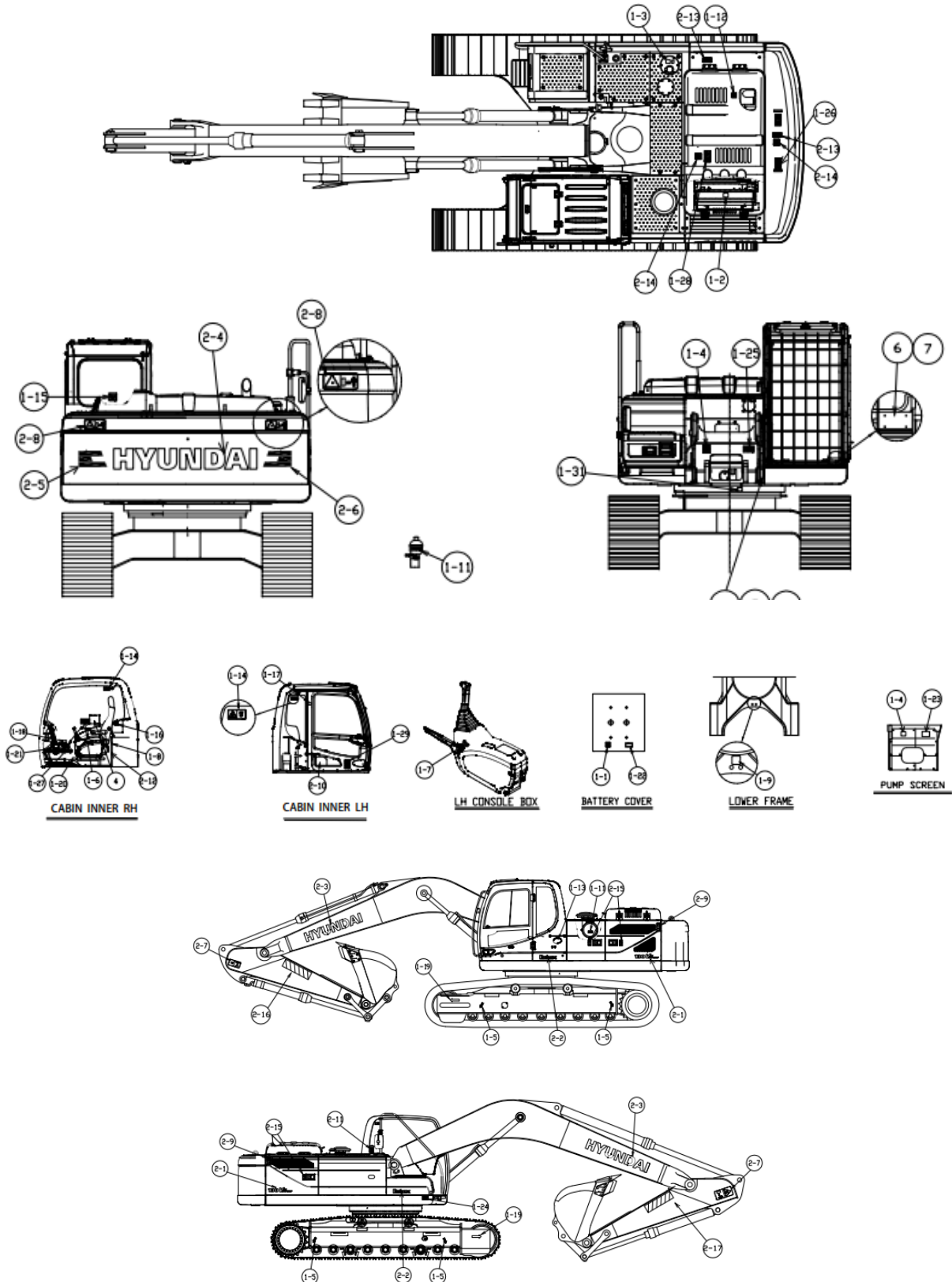


SAFETY LABELS

1. LOCATION

Always keep these labels clean. If they are lost or damaged, attach them again or replace them with a new label.



ITEM	Part Name	Q'TY
5	EXEMPTION PLATE	1
4	FOPS FOG PLATE	1
3	LIFTING CHART	1

2-17	REFLECTOR/RH	1
2-16	REFLECTOR/LH	1
2-15	STAY FIX	2
2-14	NO STEP	2
2-13	FALLING	2
2-12	CONSOLE TILTING	1
2-11	FUELING-CHINA	1
2-10	SERVICE INSTRUCTION	1
2-9	KEEP CLEAR/SIDE	2
2-8	KEEP CLEAR/REAR	2
2-7	KEEP CLEAR/ATTACH	2
2-6	REFLECTING-RH	1
2-5	REFLECTING-LH	1
2-4	HYUNDAI LOGO	1
2-3	HYUNDAI LOGO	2
2-2	LOGO-ROBEX	2
2-1	MODEL NAME	2

1-32	FUSE CAUTION	1
1-31	SWING BEARING	1
1-30	RCV/LEVER PATTERN	1
1-29	CABIN RH PILLAR(LC)	1
1-28	SHEARING	1
1-27	WATER SEPARATOR	1
1-26	LIFTING EYE	2
1-25	R/GEAR GREASE	1
1-24	TRANSPORTING	1
1-23	HYD. OIL LEVEL	1
1-22	ECU CONNECTOR	1
1-21	TURBOCHARGER	1
1-20	SAFETY SEAT	1
1-19	DIRECTION	2
1-18	CAUTION KEY OFF	1
1-17	FIRE EXTINGUISHER	1
1-16	HAMMER	1
1-15	SAFETY RR WINDOW	1
1-14	SAFETY FR/WINDOW	2
1-13	LOW EMISSION ENG	1
1-12	TURBO COVER	1
1-11	AIR CLEANER	1
1-10	ACCUMULATOR	1
1-9	TIE	2
1-8	AIRCON FILTER	1
1-7	SAFETY LEVER	1
1-6	CONTROL IDEOGRAM	1
1-5	SLINGING IDEOGRAM	4
1-4	H/PRESSURE HOSE	2
1-3	HYD. OIL LUB.	1
1-2	RADIATOR	1
1-1	BATT. ACCIDENT	1

2. DESCRIPTION

There are several specific warning labels on this machine please become familiarized with all warning labels.

Replace any safety label that is damaged, or missing. If a safety label is attached to a part that is replaced, install a safety label on the replacement part.

1) BATTERY ACCIDENT (item 1-1)

This warning label is positioned on the battery cover.

⚠ **Electrolyte containing sulfuric acid cause severe burns. Avoid being in contact with skin, eyes or clothes. In the event of accident flush with sufficient water, call a physician immediately.**

※ **Maintain the electrolyte at the recommended level. Add distilled water to the battery only when starting up, never when shutting down.**

With electrolyte at proper level, less space may cause the gases to be accumulated in the battery.

⚠ **Extinguish all smoking materials and open flames before checking the battery.**

⚠ **Do not use matches, lighters or torches as a light source near the battery for the probable presence of explosive gas.**

⚠ **Do not allow unauthorized personnel to change the battery or to use booster cables.**

⚠ **For safety from electric shock, do not battery terminal with a wet hand.**



2) RADIATOR CAP (item 1-2)

This warning label is positioned on the radiator.

⚠ **Never open the filler cap while engine running or at high coolant temperature.**



3) HYDRAULIC OIL LUBRICATION (item 1-3)

※ This warning label is positioned on the top of the hydraulic tank.

- ▲ Do not mix with different brand oils.
Never open the filler cap while high temperature.
- ▲ Loosen the cap slowly and release internal pressure completely.



4) HIGH PRESSURE HOSE (item 1-4)

This warning label is positioned on the screen plate.

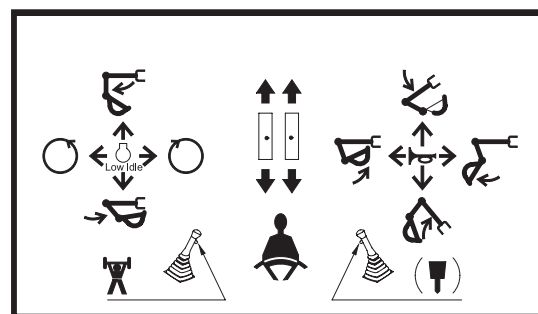
- ▲ Escaping fluid under pressure can penetrate the skin causing serious injury.
- ※ Study the service manual before service job.



5) CONTROL IDEOGRAM (item 1-6)

This warning label is positioned in right window of the cab.

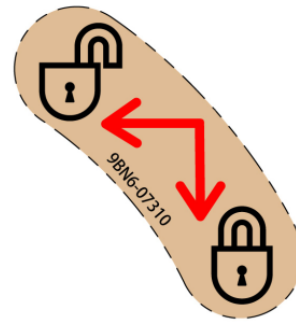
- ▲ Check the machine control pattern for conformance to pattern on this label. If not, change label to match pattern before operating machine.
- ▲ Failure to do so could result in injury or death.



6) **SAFETY LEVER** (item 1-7)

This warning label is positioned on the cover of the safety lever.

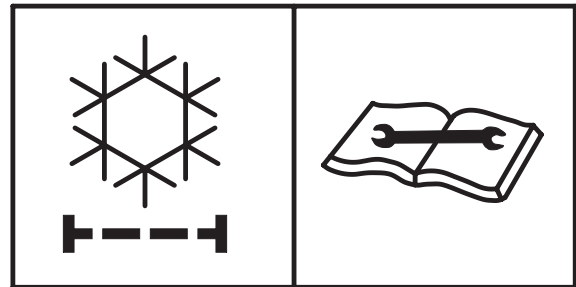
- ⚠ **Before you get off the machine be sure to place the safety lever LOCKED position.**



7) **AIR CONDITIONER FILTER** (item 1-8)

This warning label is positioned on the air conditioner cover.

- ※ **Periodic and proper inspection, cleaning and change of filter prolong air conditioner life time and maintain good performance.**



8) **TIE** (item 1-9)

This warning label is positioned on the lower frame.

- ⚠ **Never tow the machine using tie hole, because this may break.**



9) ACCUMULATOR (item 1-10)

This warning label is positioned on the accumulator of the solenoid valve.

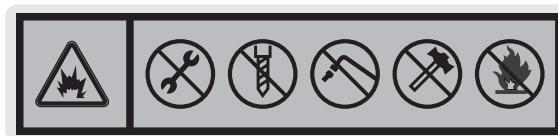
- ※ The accumulator is filled with high-pressure nitrogen gas, and it is extremely dangerous if it is handled in the wrong way. Always observe the following precautions.

Never make any hole in the accumulator

- ⚠ expose it to flame or fire.

Do not weld anything to the accumulator.

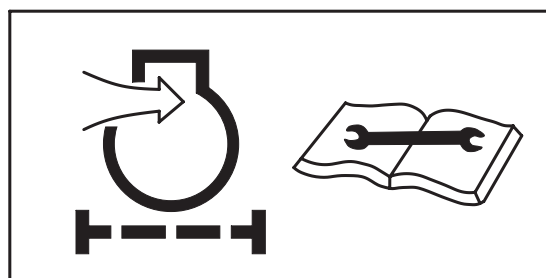
- ※ When carrying out disassembly or maintenance of the accumulator, or when disposing of the accumulator, it is necessary to release the gas from the accumulator. A special air bleed valve is necessary for this operation, so please contact your Hyundai distributor.



10) AIR CLEANER FILTER (item 1-11)

This warning label is positioned on the air cleaner cover.

- ※ Periodic and proper inspection, cleaning and change of elements prolong engine life time and maintain the good performance of engine.



11) TURBOCHARGER COVER (item 1-12)

This warning label is positioned on the turbocharger cover.

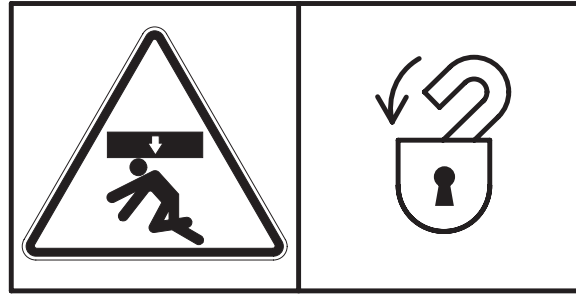
- ⚠ Do not touch turbocharger or it may cause severe burn.



12) SAFETY FRONT WINDOW (item 1-14)

⚠ This warning label is positioned on the both side window of the cab.

Be careful that the front window may be promptly closed.



13) SAFETY REAR WINDOW (item 1-15)

This warning label is positioned on the rear window of the cab.

- ※ **The rear window serves as an alternate exit.**
- ※ **To remove rear window, pull the ring and push out the glass.**



14) HAMMER (item 1-16)

This tag is located in the cockpit right center by the window.

- ※ **In case of emergency, use escape hammer to break this window for escape.**



15) FIRE EXTINGUISHER(item 1-17)

This tag is located in the rear left of the cockpit.

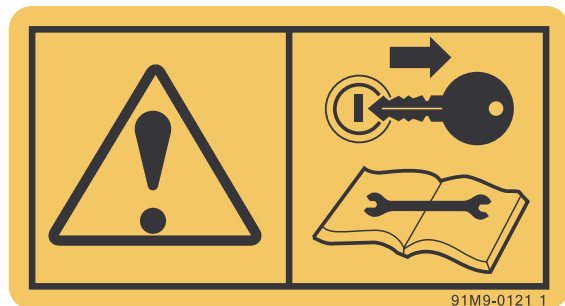
- ※ **Read and understand the instructions on the extinguisher label.**



16) CAUTION KEY OFF (item 1-18)

This warning label is positioned on the right side window of the cab.

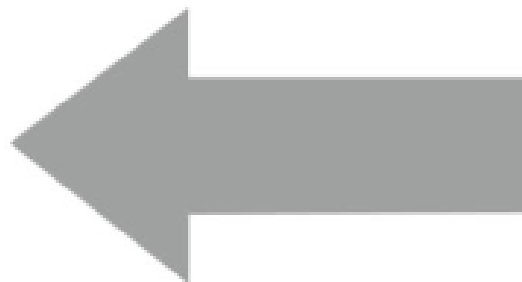
- ⚠ **Park on a flat place and stop the engine for inspecting and repairing. Properly TAG machine is not operational. (remove start key)**
- ※ **Extreme care shall be taken during maintenance work.**



17) DIRECTION (item 1-19)

This label is on the side frame of the lower frame at the guide wheel

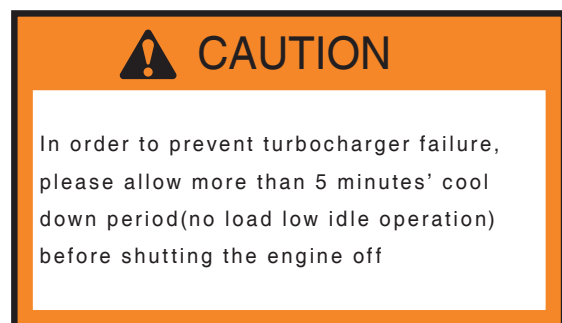
- ※ **The arrow indicates the direction in which the excavator is moving**



18) TURBOCHARGER (item 1-21)

This warning label is positioned on the right window of the cab.

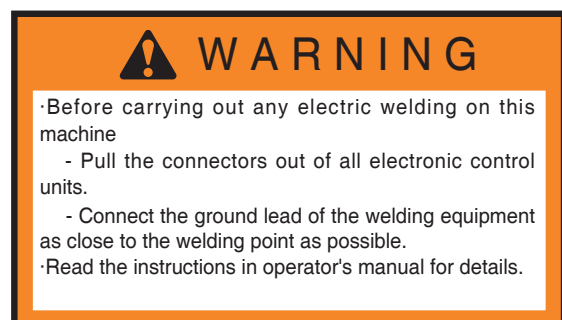
- ⚠ **In order to prevent turbocharger failure, please allow more than 5 minutes' cool down period (no load low idle operation) before shutting the engine off.**



19) ECU CONNECTOR (item 1-22)

This warning label is positioned on the battery cover.

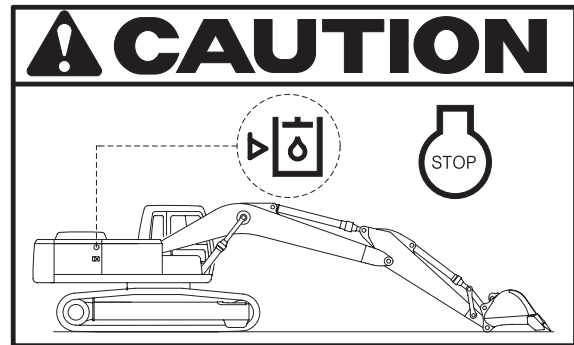
- ⚠ **Before carrying out any electric welding on this machine, follow the below procedure.**
- Pull the connector out of all electric control units.
- Connector the ground lead of the welding equipment as close to the welding point as possible.



20) HYDRAULIC OIL LEVEL (item 1-23)

This warning label is positioned on the screen plate.

- ⚠ Place the bucket on the ground whenever servicing the hydraulic system.
- ✳ Check oil level on the level gauge.
- ✳ Refill the recommended hydraulic oil up to specified level if necessary.



21) TRANSPORTING (item 1-24)

This warning label is positioned right side of upper frame.

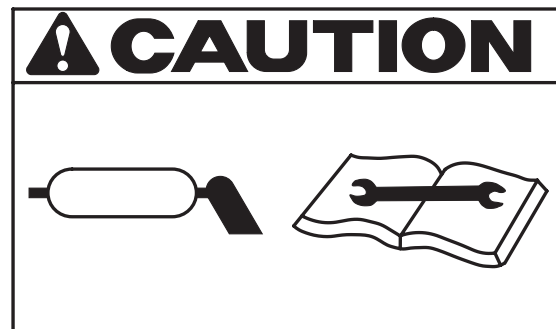
- ⚠ Study the operator's manual before transporting the machine, if provided and tie down arm and track to the carrier with lashing wire.
- See page 5-6 for details.



22) REDUCTION GEAR GREASE (item 1-25)

This warning label is positioned in the front of upper frame.

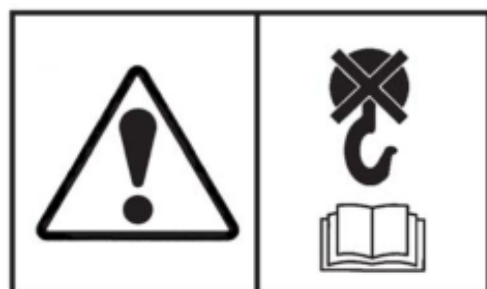
- ⚠ Grease is under high pressure.
- ⚠ Grease coming out of the grease plug under pressure can penetrate the body causing injury or death.



23) LIFTING EYE (item 1-26)

This warning label is positioned on the counterweight.

- ⚠ Do not lift the machine by using lifting eyes on the counterweight or the lifting eyes may be subject to overload causing its breaking and possible personal injury.



24) WATER SEPARATOR (item 1-27)

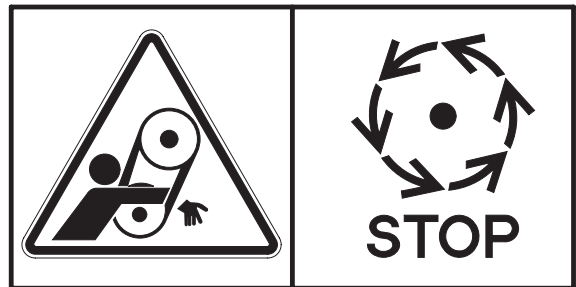
In order to protect high pressure fuel system. Please drain water in water separator before starting the engine.



25) SHEARING-ENGINE HOOD (item 1-28)

This warning label is positioned on the engine hood.

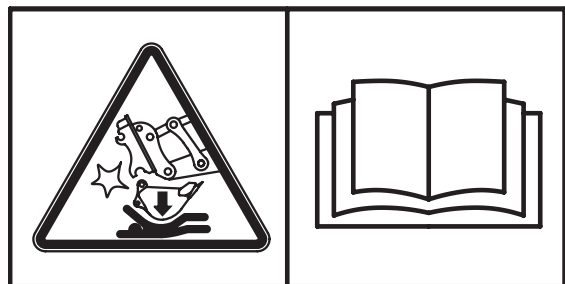
- ▲ Don't open the engine hood during the engine's running.
- ▲ Don't touch exhaust pipe or it may cause severe burn.



26) RCV LEVER PATTERN (item 1-30)

This warning label is positioned on top of LH console box.

- ▲ Check the machine control pattern for conformance to pattern on this label. If not, change label to match pattern before operating machine.
- ▲ Failure to do so could result in injury or death



27) SWING BEARING (item 1-31)

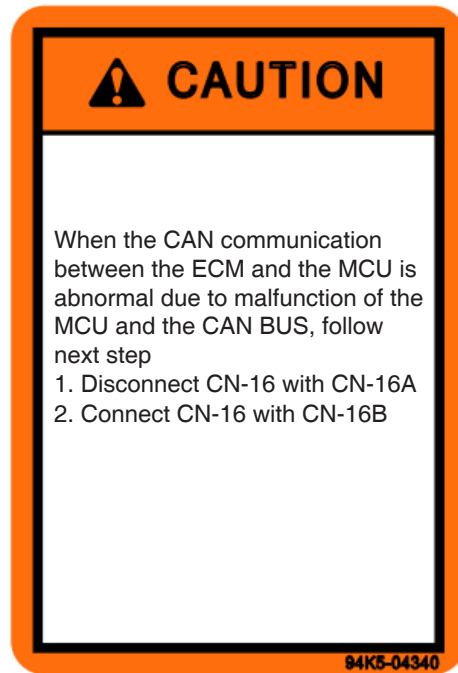
This warning label is positioned in the front of swing ring gear.



28) FUSE CAUTION (item 1-32)

When the CAN communication between the ECM and the MCU is abnormal due to malfunction of the MCU and the CAN BUS, follow next step.

- ⚠ **Disconnect CN-16 with CN-16A**
Connect CN-16 with CN-16B



29) REFLECTING (item 2-5,2-6)

This warning label is positioned on the rear of counterweight.

- ⚠ **To prevent serious personal injury or death keep clear of machine swing radius.**
- ⚠ **Do not deface or remove this label from the machine.**



30) KEEP CLEAR / ATTACH (item 2-7)

This warning label is positioned on both side of the arm.

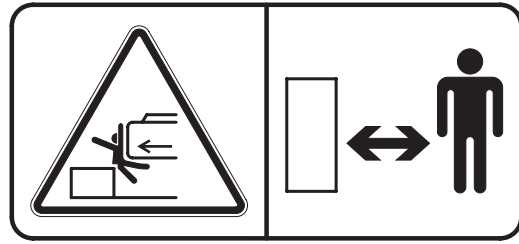
- ⚠ **Serious injury or death can result from falling of the attachment.**
- ⚠ **To prevent serious injury or death, keep clear the underneath of attachment.**



31) KEEP CLEAR / REAR (item 2-8)

This warning label is positioned on the rear of counterweight.

- ⚠ **To prevent serious personal injury or death keep clear of machine swing radius.**
- ⚠ **Do not deface or remove this label from the machine.**



32) KEEP CLEAR / SIDE (item 2-9)

This warning label is positioned on the side of LH rear side cover.

- ⚠ **To prevent serious personal injury or death keep clear of machine swing radius.**
- ⚠ **Do not deface or remove this label from the machine.**



33) FUELING (item 2-11)

This warning label is positioned on the right side of fuel filler neck.

- ⚠ **Stop the engine when refueling. All lights or flames shall be kept at a safe distance while refueling.**



34) FALLING (item 2-13)

This warning label is positioned on the top of the hydraulic tank.

- ⚠ **Falling is one of the major cause of per-sonal injury.**
- ⚠ **Be careful of slippery conditions on the platforms, steps and handrails when standing on the machine.**



35) NO STEP (item 2-14)

This warning label is positioned on the engine hood and counterweight.

- ⚠ **Don't step on the engine hood and counterweight.**



36) STAY FIX (item 2-15)

This warning label is positioned on the side cover.

- ⚠ **Be sure to support the stay when the door needs to be opened.**
- ⚠ **Be careful that the opened door may be closed by the external or natural force like strong wind.**



37) REFLECTOR (item 2-16,2-17)

This warning label is positioned on both sides of the arm.

- ⚠ **To prevent serious personal injury or death keep clear of machine swing radius.**
- ⚠ **Be careful that the opened door may be closed by the external or natural force like strong wind.**

